

# THE STATE UNIVERSITY SYSTEM OF FLORIDA

## What does it take to get in?



in partnership with  
**Judi Robinovitz Associates Educational Consulting**

ACCREDITED BY ADVANCED & SACS

Boca Raton  
(561) 241-1610

Coral Springs  
(954) 510-0600

Palm Beach Gardens  
(561) 626-2662

Wellington  
(561) 333-8882

Weston  
(954) 510-0600

[www.ScoreAtTheTop.com](http://www.ScoreAtTheTop.com)



Copyright © 2016  
All Rights Reserved

# THE STATE UNIVERSITY SYSTEM OF FLORIDA:

## What does it take to get in?

# ADMISSION STATISTICS FOR SUS SCHOOLS



(Based on SUS Admission presentation in fall 2016 & follow-up emails)

	Mid - 50% Accepted: Summer & Fall 2016				% Acc	Honors Program Minimum	Recs Required?	Deadline & Admission Notification Decision
	GPA	Old SAT (2400)	New SAT (1600)	ACT				
<b>FAMU</b>	3.0-3.5 s 3.0-3.5 f	1203-1500 s 1203-1500 f	1002-1200 f	22.73 s 22.73 f	68% s 37% f	GPA: 3.5 New SAT: 1200 ACT: 27	2	Rolling
<b>FAU</b>	3.42-3.9 s 3.73-4.37 f	1390-1620 s 1490-1760 f	1080-1250 f	18-23 s 21-25 f	57% s 51% f	GPA: 3.8 Old SAT: 1800 ACT: 27	No	Rolling Priority: Feb 15
<b>FGCU</b>	3.38-4.12 s 3.42-4.22 f	1400-1640 s 1470-1720 f	1140 f	20-24 s 22-26 f	61% s 54% f	GPA: 3.5 Old SAT: 1700 New SAT: 1220 ACT: 25	Scholarship or borderline only	Rolling Merit Scholarship: Nov 15 Priority: Feb 15
<b>FIU</b>	3.7s 4.0 f	1530 s 1700 f	1180 f	21 s 23 f	52% s 48% f	GPA: 3.5 Old SAT: 1850 New SAT: 1320 ACT: 28	Scholarship only	Rolling Priority scholarship: Nov 1
<b>FL POLY</b>	3.5 f	1775 f	1260 f	26 f	69% f		No	11/2 deadline for 12/1 decision Rolling after 1/1 (space available)
<b>FSU</b>	3.5-4.1 s 3.9-4.4 f	1640-1880 s 1740-2000 f	1240-1400 f	24-28 s 26-31 f	52% s 46% f	GPA: 4.1-4.5 Old SAT: 1990-2120 New SAT: 1400-1480 ACT: 30-32	No	10/19 deadline for 12/8 decision 1/18 deadline for 3/16 decision Other deadlines: arts, nursing
<b>New</b>	3.71-4.31 f	1730-2020 f	1240-1420 f	26-31 f	57% f	Holistic Review	1	Rolling, Nov 1 application & FAFSA priority deadline April 15 guaranteed scholarship program deadline
<b>UCF</b>	3.6-4.0 s 3.7-4.3 f	1510-1740 s 1710-1965 f	1230-1400 f	23-26 s 25-29 f	51% s 47% f	Average: GPA: 4.3 New SAT: 1409 ACT: 31	No	Rolling
<b>UF</b>	4.2-4.5 s 4.2-4.5 f	1760-2080 s 1760-2080 f	1260-1460 f	27-32 s 27-32 f	45% s 45% f	Holistic Review	No	Nov 1 deadline for Feb 10 decision
<b>UNF</b>	3.0-3.6 s 3.6-4.4 f	1490-1710 s 1650-1900 f	1270 f	20.5-23.75 s 24.5-29 f	69% s 37% f	Holistic Review	Not required, but encouraged	Rolling
<b>USF</b>	3.38-3.85 s 3.83-4.39 f	1500-1700 s 1680-1940 f	1140-1310 f	23-26 s 26-30 f	65% s 40% f	GPA: 3.8 New SAT: 1300 ACT: 29	No	Modified Rolling
<b>UWF</b>	3.5 s 3.6 f	1504 s 1558 f	1107 f	22 s 24 f	38% s 51% f	GPA: 3.5 Old SAT: 1770 ACT: 26	No	Rolling Priority: Dec 1

s = summer session • f = fall admission

SAT/ACT essay not required • All schools superscore the SAT • All schools but UF & UCF superscore the ACT

# THE STATE UNIVERSITY SYSTEM OF FLORIDA: What does it take to get in?

## OTHER STATISTICS FOR SUS SCHOOLS



(Based on SUS Admission presentation in fall 2016)

	Location	Undergrad Enrollment	% Undergrad Minority	% Freshmen in Top 10% of HS Class	% Freshmen in Top 20% of HS Class	6-Year Graduation Rate	Top 3 Undergrad Majors
<b>FAMU</b>	Tallahassee	8,166	90%	14%	40%	39%	Pharmacy Business Admin Criminal Justice
<b>FAU</b>	Boca Raton	24,227	48%	11%	35% (top 25%)	48%	Business Admin & Mgt Biological Sciences Psychology
<b>FGCU</b>	Fort Meyers	13,684	32%	13%	27%	43%	Management Biology Communications
<b>FIU</b>	Miami	40,231	84%	16%	36%	57%	Psychology Biology Hospitality Management
<b>FL Poly</b>	Lakeland	887	30%	n/a	n/a	n/a	Computer Science, Computer Engineering, Mech & Indust Engineer
<b>FSU</b>	Tallahassee	32,459	33%	38%	72%	79%	Biological Sciences Business Engineering
<b>New College</b>	Sarasota	861	26%	43%	73%	71%	Psychology Anthropology Biology
<b>UCF</b>	Orlando	54,527	40%	40%	78% (top 25%)	70%	Psychology Business Engineering
<b>UF</b>	Gainesville	35,043	35%	72%	96%	87%	Psychology Biology Mechanical Engineering
<b>UNF</b>	Jacksonville	14,077	30%	28%	48%	55%	Psychology Communication Business Mgmt
<b>USF</b>	Tampa	30,319	38%	34%	53%	68%	Biomedical Sciences Psychology Mechanical Engineering
<b>UWF</b>	Pensacola	9,649	29%	Don't capture class rank	Don't capture class rank	46%	Pre-Professional Biology Nursing Business

# THE STATE UNIVERSITY SYSTEM OF FLORIDA:

## What does it take to get in?

### MINIMUM ELIGIBILITY

A student's GPA is recalculated on a 4.0 scale by the university and admission *eligibility* is determined by the following:

- GPA: 3.0 or higher + SAT or ACT score
- GPA: 2.5-2.99 + at least the minimum scores in all 3 sections of either the SAT or ACT:

	Reading	Math	Writing
Old SAT	460	460	440
New SAT	500	500	
ACT	19	19	18

In addition, students must have completed these secondary academic unit requirements:

Subject	Units	Details
English	4	3 of which must have included substantial writing requirements
Math	4	At or above the Algebra I level
Natural Science	3	2 of which must have included substantial laboratory requirements
Social Science	3	Includes anthropology, civics, economics, geography, government, history, political science, psychology, sociology
Foreign Language	2	Both units must be in the same foreign language; ASL will be accepted
Additional Academic Credits	2	Level II courses in the Department of Education <i>Course Code Directory</i> in English, Math, Science, Social Science, Foreign Language, Fine Arts; Level III courses listed in the <i>Directory</i> in any academic discipline; Dual enrollment courses for which both high school & college credits are granted; others...

**Profile Assessment:** A student applying for admission who does not meet these requirements may be eligible for admission through a student assessment which considers additional factors, including, but not limited to, the following: family educational background, socioeconomic status, and graduation from a low-performing high school, graduation from an international baccalaureate program, geographic location, and special talents. These additional factors shall not include preferences in the admissions process for applicants on the basis of race, national origin or sex. The student may be admitted if, in the judgment of an appropriate faculty committee, there is sufficient evidence that the student can be expected to succeed at the institution.

# THE STATE UNIVERSITY SYSTEM OF FLORIDA: What does it take to get in?

## UNIVERSITY OF FLORIDA Profile of Admitted Freshmen (2016)

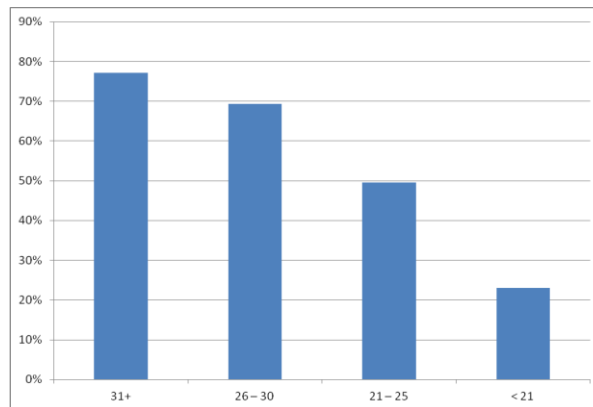


(Email from Shannon Murphy, Assistant Director, Communications & School Relations, University of Florida, July 11, 2016)

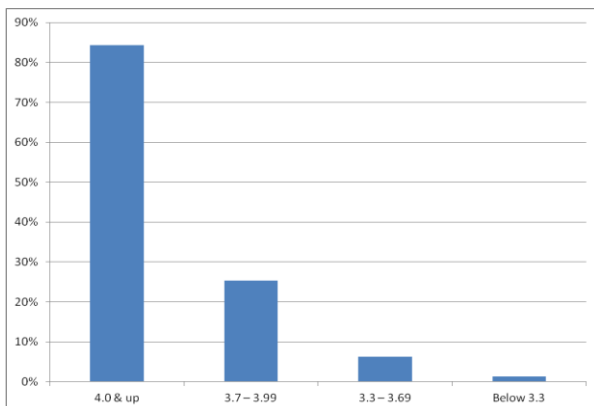
Few students are admitted purely on academic merit. While the potential for academic success is a primary consideration, UF's comprehensive holistic application review also considers personal essays, academic awards, extracurricular activities, family background and home community. All information in the applicant's file, academic and non-academic, is considered in relation to the size and strength of the applicant pool for that class.

MIDDLE 50% OF ACCEPTED STUDENTS (2016)	
<b>GPA</b>	4.2 – 4.5
<b>NEW SAT (1600)</b>	1290 – 1440
<b>OLD SAT (2400)</b>	1290 – 1440
<b>ACT</b>	28 – 32

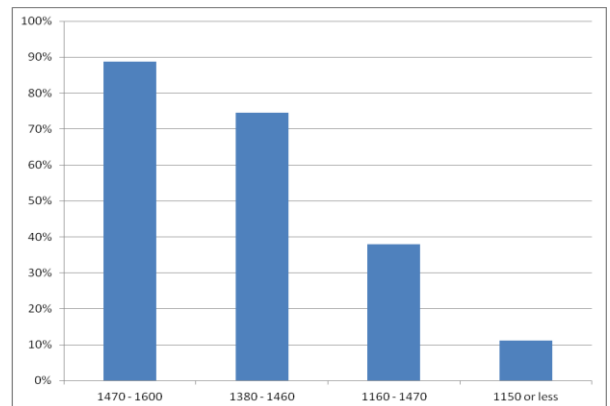
**ADMISSION RATE BY # CORE COURSES (2013)**



**ADMISSION RATE BY GPA (2013)**



**ADMISSION RATE BY OLD SAT SCORE (2013)**



Applicants to programs in [Music, Art and Art History](#) and [Theatre and Dance](#) have additional requirements/auditions

# THE STATE UNIVERSITY SYSTEM OF FLORIDA: What does it take to get in?

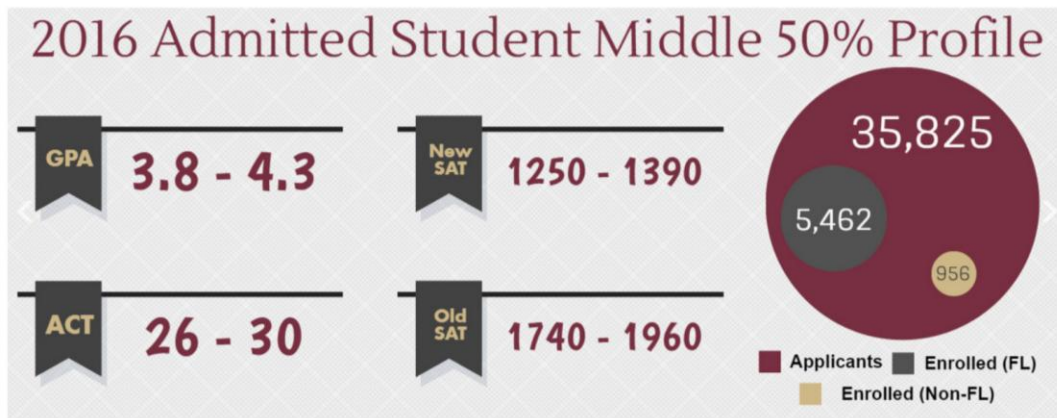
## FLORIDA STATE UNIVERSITY Profile of Admitted Freshmen (2016)



(From FSU's website, August 16, 2016: <http://admissions.fsu.edu/freshman/>)

FSU receives over 30,000 applications. Admission is competitive. It requires graduation from a regionally accredited high school with certain high school academic units, a cumulative grade point average (GPA) in those academic units, and test scores as outlined on this page. **Satisfying these minimum requirements does not guarantee admission.** A variety of other factors are also considered in the review process; these include the written essay, the pattern and quality of courses and curriculum, grade trends, class rank, and educational objectives.

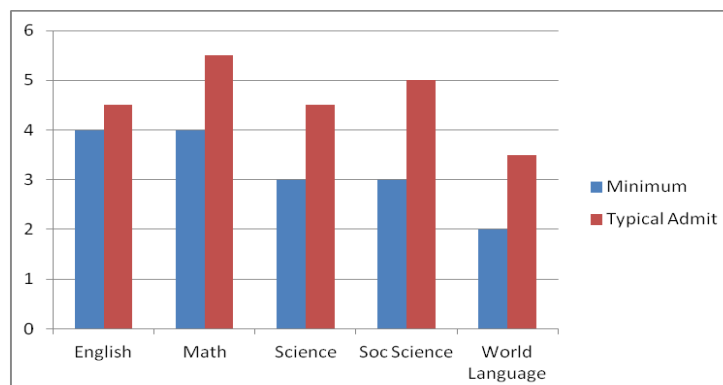
Applicants who bring other important attributes to the University community may also receive additional consideration. These applicants include students applying to the [CARE](#) Summer Bridge Program (disadvantaged students), visual and performing artists, and skilled athletes.



*The January SAT and February ACT are the latest tests that can be used for admission*

### High School Course Units

The Florida Board of Governors sets the minimum eligibility requirements in the State University System (SUS). Satisfying these minimum requirements does not guarantee admission to Florida State University. Admission is selective, and admitted students typically exceed the minimum requirements.



Contact the academic department if majoring in [dance](#); [motion picture, television, and recording arts](#); [music](#); or [theatre](#).

# THE STATE UNIVERSITY SYSTEM OF FLORIDA: What does it take to get in?

## UNIVERSITY OF CENTRAL FLORIDA Profile of Admitted Freshmen (2016)



(From UCF's web site, August 29, 2016:  
<http://admissions.ucf.edu/apply/freshman/>)

### Freshman Class Profile - Fall 2016

#### Admission Stats

Avg Old SAT (R+M): 1263  
Avg New SAT: 1324  
Avg ACT: 28  
Avg H.S. GPA: 4.0  
Nat'l Merit Scholars: 76  
Minority: 43%

#### Top 5 Majors

Engineering  
Biomedical Sciences  
Computer Science  
Biology  
Business

#### Top 5 States

Florida  
Illinois  
New York  
New Jersey  
Georgia

#### Top 5 Countries

China  
India  
Venezuela  
Colombia  
Brazil

### Top Ten Knights

Guaranteed Admission to Summer, Fall, or Spring

- Currently attend a Florida high school
- Top 10% of senior class (3.9 recalculated GPA if your school does not rank)
- Old SAT: 1010 (Reading + Math) on New SAT: 1090 or ACT: 21.
- 4 units of approved academic core math by end of senior year
- January 15 deadline

# APPLICATION ESSAYS: UF • FSU • UCF

## UNIVERSITY OF FLORIDA [mycoalition.org](http://mycoalition.org)

(352) 392-1365



UF uses the **Coalition Application** and requires its personal statement – Please choose one (2500 characters allowed, approx 550 words):

- *Tell a story from your life, describing an experience that either demonstrates your character or helped to shape it.*
- *Describe a time when you made a meaningful contribution to others in which the greater good was your focus. Discuss the challenges and rewards of making your contribution.*
- *Has there been a time when you've had a long-cherished or accepted belief challenged? How did you respond? How did the challenge affect your beliefs?*
- *What is the hardest part of being a teenager now? What's the best part? What advice would you give a younger sibling or friend (assuming they would listen to you)?*
- *Submit an essay on a topic of your choice.*

UF's Application Questions supplement on the Coalition Application is similar to the questions asked in past years on the freshman application. It provides large data-entry blocks for you to enter detailed information about your community service, employment, and additional information. (Extracurricular activities are entered in the Profile section of the Coalition Application.)

**Recommendations:** Not required; if sent, won't make a difference.

## FLORIDA STATE UNIVERSITY <https://admissions.fsu.edu/undergradapp/>

(850) 644-6200

Students will choose one essay to write from these three prompts (same as first 3 above for UF) – 650-word limit:

- *Tell a story from your life, describing an experience that either demonstrates your character or helped to shape it.*
- *Describe a time when you made a meaningful contribution to others in which the greater good was your focus. Discuss the challenges and rewards of making your contribution.*
- *Has there been a time when you've had a long-cherished or accepted belief challenged? How did you respond? How did the challenge affect your beliefs?*

**Activities:** FSU strongly encourages you to upload your activity résumé into your application (2 pages or 1000 words max).

**Recommendations:** "We do not want letters of recommendation." Hege Ferguson, Director of Admissions

## UNIV OF CENTRAL FLORIDA <https://apply.ucf.edu/application> or [www.commonapp.org](http://www.commonapp.org)

(407) 823-3000

**UCF accepts the Common Application or its own application.** If you use UCF's own application, you must respond to two of the topics below. Your personal statement should be no longer than a total of 500 words or 7000 characters for both statements combined. The best personal statements are not necessarily the longest ones.



1. *If there has been some obstacle or "bump in the road," in your academic or personal life, please explain the circumstances.*
2. *How has your family history, culture or environment influenced who you are?*
3. *Why did you choose to apply to UCF?*
4. *What qualities or unique characteristics do you possess that would allow you to contribute to the UCF community?*

**Activities:** The UCF application seems to give you unlimited space in which to describe your extracurricular activities, community service, talents & awards, and programs that helped prepare you for higher education.

**Recommendations:** Counselor recommendation is optional: <https://apply.ucf.edu/forms/forms/counselor-recommendation/>  
Recommendations will be considered if submitted, especially for a student on the "bubble."



# APPLICATION ESSAYS: UCF & NEW COLLEGE

## (Common Application)



UCF and New College of Florida are the only state universities in Florida on the Common Application. The application requires a personal statement. The text below is excerpted directly from the Common Application.



### **PERSONAL STATEMENT**

**Instructions.** The essay demonstrates your ability to write clearly and concisely on a selected topic and helps you distinguish yourself in your own voice. *What do you want the readers of your application to know about you apart from courses, grades, and test scores?* Choose the option that best helps you answer that question and write an essay of no more than 650 words, using the prompt to inspire and structure your response. Remember: 650 words is your limit, not your goal. Use the full range if you need it, but don't feel obligated to do so. (The application won't accept a response shorter than 250 words.)

- *Some students have a background or story that is so central to their identity that they believe their application would be incomplete without it. If this sounds like you, then please share your story.*
- *Recount an incident or time when you experienced failure. How did it affect you, and what lessons did you learn?*
- *Reflect on a time when you challenged a belief or idea. What prompted you to act? Would you make the same decision again?*
- *Describe a place or environment where you are perfectly content. What do you do or experience there, and why is it meaningful to you?*
- *Discuss an accomplishment or event, formal or informal, that marked your transition from childhood to adulthood within your culture, community, or family.*

[www.commonapp.org](http://www.commonapp.org)

(600+ universities accept the Common Application)

# APPLICATION ESSAYS: OTHER SUS SCHOOLS

FAMU	Required	2 essays @ 250 words or 1 essay @ 500 words
FAU	None	
FIU	Optional, not required	Why do you want to attend FIU? (No length requirement)  Write a letter as a senior reflecting on your high school career. (500 words)
FGCU	Optional, not required	Why is FGCU the best fit for you? (No length requirement)
FL Poly	None	
UNF	None	
USF	Optional, not required	Any topic (No length requirement)
UWF	None	

# 10 GREAT OPENING LINES FROM STANFORD APPLICATION ESSAYS

The writers of each of these essays were offered admission to Stanford:

1. I change my name each time I place an order at Starbucks.
2. When I was in the eighth grade I couldn't read.
3. While traveling through the daily path of life, have you ever stumbled upon a hidden pocket of the universe?
4. I have old hands.
5. I was paralyzed from the waist down. I would try to move my leg or even shift an ankle but I never got a response. This was the first time thoughts of death crossed my mind.
6. I almost didn't live through September 11<sup>th</sup>, 2001
7. The spaghetti burbled and slushed around the pan, and as I stirred it, the noises it gave off began to sound increasingly like bodily functions.
8. I have been surfing Lake Michigan since I was 3 years old.
9. I stand on the riverbank surveying this rippled range like some riparian cowboy – instead of chaps, I wear vinyl, thigh-high waders and a lasso of measuring tape and twine slung over my arm.
10. I had never seen anyone get so excited about mitochondria.

Notice how NONE OF THESE talk about helping people or doing community service! Boring!!!! – Do not write an essay about anything you have already discussed in your application.



# SAT & ACT Preparation 2016-2017

## SAT WORKSHOPS

(No classes during Spring or Winter Breaks)

### Test Date: Oct 1

7 Sundays  
Starting Aug 14  
1:30 – 5 pm

### Test Date: Nov 5

8 Tuesdays  
Starting Sept 13  
5:30 – 8:30 pm

### Test Date: Dec 3

8 Mondays  
Starting Oct 10  
5:30 – 8:30 pm

### Test Date: Jan 21

8 Tuesdays  
Starting Nov 15  
5:30 – 8:30 pm

### Test Date: March 11

8 Wednesdays  
Starting Jan 18  
5:30 – 8:30 pm

### Test Date: May 6

8 Tuesdays  
Starting Mar 7  
5:30 – 8:30 pm

### Test Date: June 3

8 Wednesdays  
Starting Apr 12  
5:30 – 8:30 pm

### SAT Simulations

Saturdays @ 8:30 am  
Aug 27, Sept 24, Oct 22, Nov 19, Jan 14  
Jan 28, Mar 4, April 8, Apr 29, May 27

## ACT WORKSHOPS

(No classes during Spring or Winter Breaks)

### Test Date: Sept 10

4 Tuesdays & 4 Thursdays  
Starting Aug 16  
5:30 – 8:30 pm

### Test Date: Oct 22

8 Sundays Starting Aug 28 10 am – 1 pm **or** 8 Wednesdays Starting Aug 31 5:30 – 8:30 pm

### Test Date: Dec 10

8 Sundays Starting Oct 9 2 – 5 pm **or** 8 Thursdays Starting Oct 13 5:30 – 8:30 pm

### Test Date: Feb 11

5 Tuesdays & 5 Thursdays  
Starting Jan 10  
6 – 8:30 pm

### Test Date: Apr 8

8 Sundays Starting Feb 5 10 am – 1 pm **or** 8 Mondays Starting Feb 6 5:30 – 8:30 pm

### Test Date: June 10

8 Sundays Starting Apr 9 10 am – 1 pm **or** 8 Mondays Starting Apr 10 5:30 – 8:30 pm

### ACT Simulations

Saturdays @ 8:30 am  
Aug 20, Sept 3, Oct 15, Dec 3, Jan 14,  
Feb 4, Feb 25, Apr 1, May 6, Jun 3

## More than 30 years of TOP SCORE GAINS!

- 🎯 Learn test-taking strategies from experts
- 🎯 Private tutoring & small group workshops
- 🎯 Complimentary test simulations
- 🎯 Practice with REAL tests



Arranged at Your Convenience:

Private SAT & ACT Tutoring • College Counseling (Hourly & Comprehensive)

Boca Raton  
561-241-1610

Coral Springs  
954-510-0600

Palm Beach Gardens  
561-626-2662

Wellington  
561-333-8882

Weston  
954-510-0600

ACCREDITED BY THE SOUTHERN ASSOCIATION OF COLLEGES & SCHOOLS



**Our Vision & Mission:**

To be the learning environment of choice

To provide expert support and guidance to students,  
inspiring their intellectual curiosity, and motivating them to academic success

[www.ScoreAtTheTop.com](http://www.ScoreAtTheTop.com)